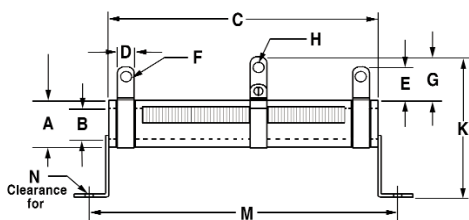
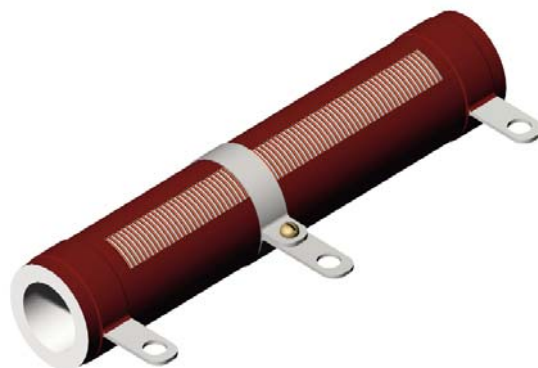


AVT AST

ADJUSTABLE WIREWOUND RESISTORS

12 WATTS THRU 225 WATTS

H.E.I. Adjustable Resistors are constructed with steatite ceramic cores and terminated with welded terminals and wound with the finest alloy resistance wires welded to the terminals. Our special formula of vitreous enamel (**AVT**) or silicone (**AST**) coatings are then used to insulate the resistors. A section of the windings are made bare for connecting to a band terminal that implements the adjustment function. This construction insures long life, durability, and reliability.

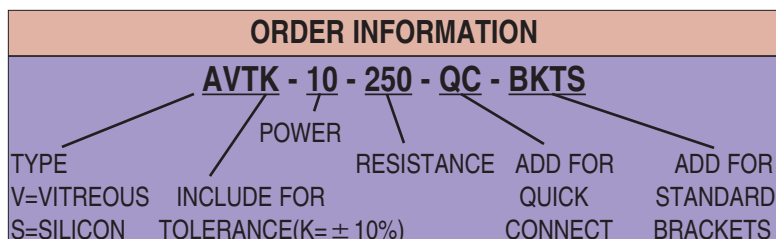


A wide variety of special resistor core sizes are available. Any tapped, combination fixed and adjustable can be made to custom specifications, including tolerance, brackets, and terminals.

TYPE	WATT	A TYP	B +/- .032(0.8)	C +/- .032(0.8)	D +/- .032(0.8)	E TYP	F TYP	G TYP	H TYP	K TYP	M TYP	N
AVT-10	12	.31 (7.9)	.19 (4.8)	1.75 (44.5)	.19 (4.8)	.44 (11.2)	.10 (2.5)	.50 (12.7)	.10 (2.5)	.94 (23.9)	2.19 (55.6)	6-32
AVT-25	25	.56 (14.2)	.31 (7.9)	2.00 (50.8)	.25 (6.4)	.56 (14.2)	.17 (4.3)	.69 (17.5)	.17 (4.3)	1.69 (42.9)	2.75 (69.8)	8-32
AVT-25A	30	.75 (19)	.50 (12.7)	2.00 (50.8)	.25 (6.4)	.56 (14.2)	.17 (4.3)	.69 (17.5)	.17 (4.3)	2.31 (58.7)	2.88 (73.2)	10-32
AVT-25B	30	.63 (16)	.45 (11.4)	2.00 (50.8)	.25 (6.4)	.56 (14.2)	.17 (4.3)	.69 (17.5)	.17 (4.3)	1.69 (42.9)	2.63 (66.8)	8-32
AVT-50	50	.56 (14.2)	.31 (7.9)	4.00 (102)	.25 (6.4)	.56 (14.2)	.17 (4.3)	.69 (17.5)	.17 (4.3)	1.69 (42.9)	4.75 (121)	8-32
AVT-50A	60	.75 (19)	.50 (12.7)	4.00 (102)	.25 (6.4)	.56 (14.2)	.17 (4.3)	.69 (17.5)	.17 (4.3)	2.31 (58.7)	4.88 (124)	10-32
AVT-50B	70	.75 (19)	.55 (14)	4.50 (114)	.25 (6.4)	.56 (14.2)	.17 (4.3)	.69 (17.5)	.17 (4.3)	2.31 (58.7)	5.38 (137)	10-32
AVT-75	75	.56 (14.2)	.31 (7.9)	6.00 (152)	.25 (6.4)	.56 (14.2)	.17 (4.3)	.69 (17.5)	.17 (4.3)	1.69 (42.9)	6.75 (171)	8-32
AVT-75A	90	.75 (19)	.50 (12.7)	6.00 (152)	.25 (6.4)	.56 (14.2)	.17 (4.3)	.69 (17.5)	.17 (4.3)	2.31 (58.7)	6.88 (175)	10-32
AVT-100	100	.75 (19)	.50 (12.7)	6.50 (165)	.25 (6.4)	.56 (14.2)	.17 (4.3)	.69 (17.5)	.17 (4.3)	2.31 (58.7)	7.38 (187)	10-32
AVT-130	130	1.13 (28.7)	.75 (19)	6.50 (165)	.31 (7.9)	.63 (16)	.17 (4.3)	.88 (22.4)	.17 (4.3)	2.81 (71.4)	7.38 (187)	10-32
AVT-160	175	1.13 (28.7)	.75 (19)	8.50 (216)	.31 (7.9)	.63 (16)	.20 (5.1)	.88 (22.4)	.17 (4.3)	2.81 (71.4)	9.38 (238)	10-32
AVT-200	225	1.13 (28.7)	.75 (19)	10.50 (267)	.31 (7.9)	.63 (16)	.20 (5.1)	.88 (22.4)	.17 (4.3)	2.81 (71.4)	11.38 (289)	10-32

AVT - VITREOUS AST - SILICONE

inches (mm)



RESISTANCE VALUE CHART

.10	.75	10	30	68	125	300	600	1.1K	3.0K	6.8K
.13	1.0	12	33	75	150	330	680	1.2K	3.5K	7.5K
.15	1.5	15	35	82	180	350	700	1.5K	3.9K	8.0K
.20	2.0	18	39	100	200	390	750	1.8K	4.0K	8.2K
.25	3.0	20	40	120	220	400	800	2.0K	4.7K	10.0K
.30	4.0	22	47	125	225	470	820	2.2K	5.0K	12.5K
.33	5.0	25	50	150	250	500	900	2.5K	5.6K	15.0K
.50	7.5	27	56	180	270	560	1.0K	2.7K	6.0K	20.0K

OPTIONAL FEATURES AVAILABLE

RESISTANCE TOLERANCE: Standard tolerance is $\pm 10\%$.
Available Tolerances: F = $\pm 1\%$, J = $\pm 5\%$, K = $\pm 10\%$

MOUNTING BRACKETS: Push-in friction grip mounting brackets are available as shown above. When required, add "BKTS" to the part number.

QUICK CONNECT TERMINALS: Resistors with a core O.D. of 9/16 or 3/4 inch can be supplied with Quick Connect Terminals except the adjustable band. As "QC" to the part number as shown.

